



The Algae Treatment Experts

PRODUCT: AQUATIC BARLEY STRAW BALES

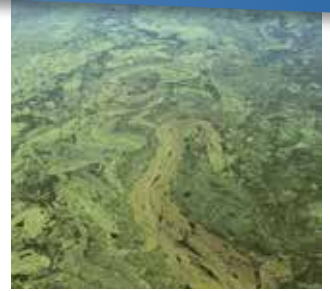
TARGET: PONDS & DAMS



Natural & safe



Quick activation within days



Simple and easy to use

New and improved fast-acting pressed barley straw bales

AQUATIC BARLEY STRAW BALES

- Long lasting: may last up to three months
- Environmental & sustainable
- Quick activation within days
- Australian made and owned
- Simple and easy to use



Aquatic Barley Straw Bales are the longest lasting of our Barley Straw range, providing up to three months cover.

Aquatic Barley Straw Bales are conveniently packaged and come ready to use in their own net bag with float included. Simply place into the water and leave to float close to the surface. Lightly shake in water every few weeks or when there is visual build-up on the mesh. Aquatic Barley Straw Bales are made from 100% natural Australian-grown barley. Perfectly suited for Australian climates and bodies of water.

How does it work?

Aquatic Barley Straw Bales harness the high carbon-to-nitrogen ratio of barley straw to effectively lower nitrogen and phosphorus levels in water.

This natural process mitigates the effects of accumulation of excess nutrients, thereby reducing contaminants in your water body. Moreover, it is entirely safe for people, pets, fish, and aquatic plants alike.

SAFE FOR



Stock, Fish, Aquatic Plants, Pets, Wildlife, The Environment & is a Natural product.

BUY ONLINE



100g



1kg



20kg



AQUATIC TECHNOLOGIES
The Water Treatment Experts

For more information visit WWW.AQUATICTECHNOLOGIES.COM.AU

HOW TO USE: AQUATIC BARLEY STRAW BALES



All of our barley straw bales are packed in specially designed mesh bags, ensuring the barley straw stays contained at the right density and does not end up on the bottom of your pond.

Each bale contains a float to ensure the bale stays suspended just below the water's surface, where the conditions are ideal for best performance.

The draw string should be used to secure the bales closest to any flowing water if possible, ie: outlets, fountains, etc.

Barley Straw Bales are perfect for outdoor ponds, Fish ponds, water features, garden water tanks and small dams.

For best results, apply BEFORE algae appears.

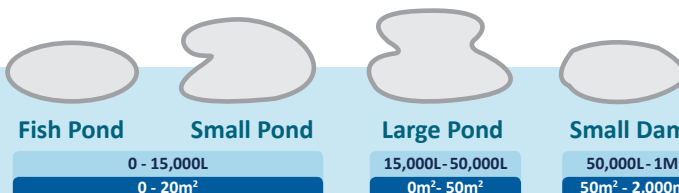
100g Aquatic Barley straw bales will treat up to 2m²

1kg Aquatic Barley straw bales will treat up to 20m²

20kg Aquatic Barley straw bales will treat up to 400m²

SUITABLE FOR

Small Ponds, Fish Ponds,
Large Pond & Small Dams.



APPLICATION RATES:



The Algae Treatment Experts

Aquatic Barley Straw Bales

Application Rates:

Where to Use	How Much to Use	How to Apply	How Often to Apply
Fish Ponds and Small Ponds	100g treats up to 2m ² in surface area.	Place net bag into the water and allow to float close to the water's surface.	Every 1 to 3 months.
Large Ponds and Small Dams	1kg treats up to 20m ² in surface area.		

For Best Results:

Place near well oxygenated areas or moving water.

Lightly shake in water every few weeks or when there is visual build-up on the mesh.

Begin additional treatments one month prior to removing the previous treatment.

If the bales begin to smell, the application rate may be too high. Remove and replace with a lower rate and place near moving water. If net bag holes are restricted, clear by shaking or washing in pond water.

Water Temperature:

Above 20°C: Barley Straw Bales activates after 7 days and becomes effective after 2 weeks.

Below 10°C: Barley Straw Bales activates after 3 to 4 weeks and becomes effective after 4 to 5 weeks.

**Always read the product label for directions.*



Head Office: 41 Yazaki Way, Carrum Downs, Vic. Australia 3201

For more information visit www.AQUATICTECHNOLOGIES.com.au