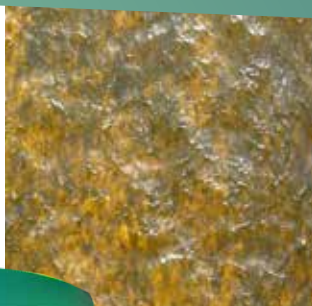




The
Water
Treatment
Experts

PRODUCT: **AQUATIC CLEAR DROP**

TARGET: **MURKY WATER**



Clears murky dam water



Clears microscopic organisms



Leaves your water crystal clear



Aquatic Clear Drop is a budget granular flocculant, best suited to working water bodies free of fish and wildlife, such as Ornamental Ponds.

WHY CHOOSE CLEAR DROP?

- Fast-acting (results in just 36 hours)
- Perfect for fast-flowing water
- Cost-effective
- Suitable for both domestic and commercial use
- Works best in water with a pH between 5 - 8

Aquatic Clear Drop is a granular flocculant designed to remove suspended clay, silt, fine organic matter, microscopic organisms & algae from the water column, improving clarity and the overall health of your water.

WHY SHOULD I USE AQUATIC CLEAR DROP?

Highly turbid water is unsafe to swim in as it greatly reduces water clarity and visibility, it is unpleasant for livestock to drink from water that contains a lot of sediment, turbid water can cause blockages in your pipes and not to mention makes the water unsightly. By using Aquatic Clear Drop, it improves the clarity and quality of your water!



SAFE FOR

Swimming, Irrigation & Stock.

BUY ONLINE

20kg



**AQUATIC
TECHNOLOGIES**
The Water Treatment Experts

For more information visit
WWW.AQUATICTECHNOLOGIES.COM.AU

This easy-to-apply product is made for clearing up murky water in dams, ponds, lakes and more.

Organic matter, microscopic organisms & some forms of algae harbour waterborne diseases & pathogens. Aquatic Clear Drop can assist in removing these particles from suspension & improving water health.

1kg of Aquatic Clear Drop treats 25,000L of water.

To calculate rectangular volume: $L \times W \times H = \text{volume (m}^3\text{)}$

To get volume in L: $\text{m}^3 \times 1000$



SUITABLE FOR



Small Pond

0 - 15,000L

0 - 20m²



Large Pond

15,000L - 50,000L

0 - 50m²



Small Dam

50,000L - 1ML

50m² - 2,000m²



Large Dam

1ML - 10ML

2,000m² - 10,000m²

APPLICATION RATES



Aquatic Clear Drop

The Water Treatment Experts

Application Rates:

Where to use	How Much To Use	Application Methods (#1 is Optimal)	When To Use
Dams and Ponds	Dissolve product at a ratio of 1-part product to 10-parts clean town or tank water. 20kg will treat 500,000L/ Half ML.	1. Dissolve the recommended amount of product with 1kg product into 10L of water into a sprayer & spray over the dam's surface as evenly as possible. 2. Sprinkle the recommended amount of product over dam's surface as evenly as possible. Allow 24-36 hours to settle to the bottom.	Once. If water remains murky, apply a second treatment after 72 hours.

**Always read the product label for directions.*

FOR BEST RESULTS Works best in water with a pH between 5 - 8. Dissolve product at a ratio of 1-part product to 10-parts clean town or tank water.



Head Office: 41 Yazaki Way, Carrum Downs, Vic. Australia 3201

For more information visit www.AQUATICTECHNOLOGIES.com.au