

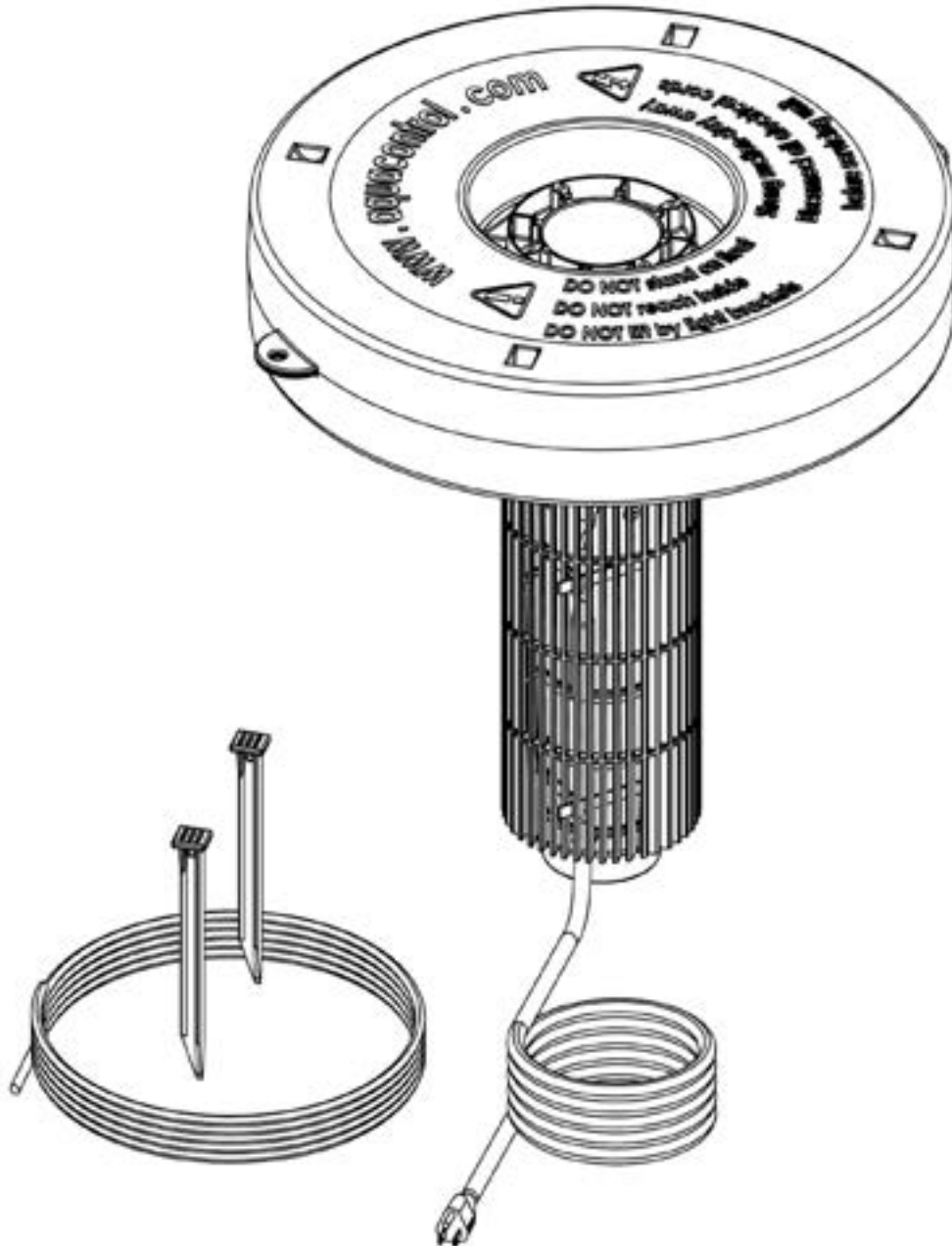
# HALF HP EVOLUTION SERIES FOUNTAINS

TARGET: **AERATION**



AERATION  
FOUNTAINS  
AUSTRALIA

## OWNER'S MANUAL



HALF HP



AERATION FOUNTAINS  
AUSTRALIA

Head Office: 41 Yazaki Way, Carrum Downs, Vic. Australia 3201 | Phone: 03 9071 2442

For more information visit [www.FOUNTAINSAUSTRALIA.com.au](http://www.FOUNTAINSAUSTRALIA.com.au)

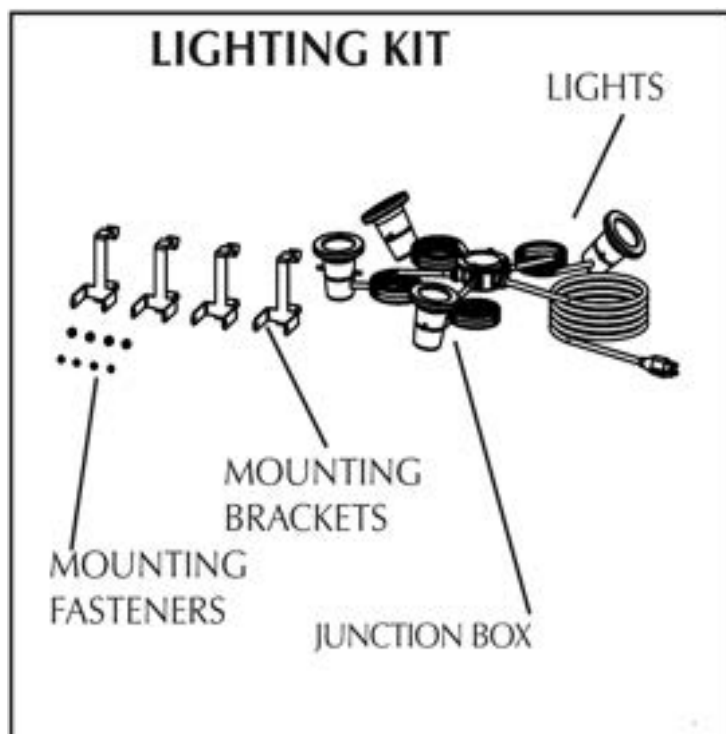
# SAFETY INSTRUCTIONS

***IMPORTANT: Reading and understanding these instructions and warranty disclaimer are necessary prior to product installation and operation.***

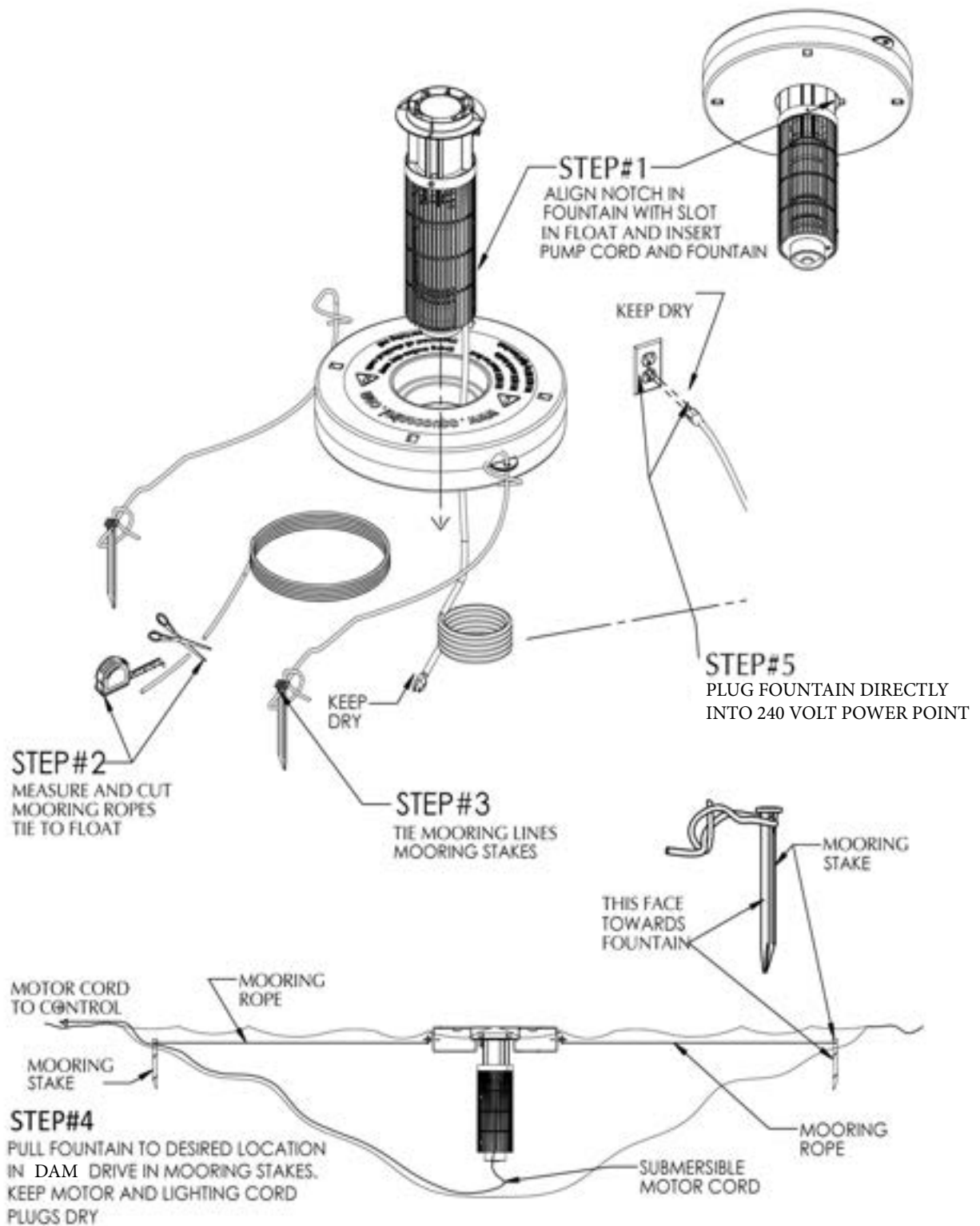
- Under **NO** circumstances should anyone enter the water with the electrical equipment plugged in and/or in operation.
- **NEVER** run the unit out of water. It may damage the seals.
- **NEVER** lift or drag the fountain by the power or light cord.
- The fountain suction screen should be inspected for clogging regularly. If matted weeds, leaves or plastic bags are present, remove them with a bristle brush. Failure to keep the suction screen clear of blockages will cause low water flow and cause the fountain motor to fail. This type of failure is **NOT** covered under the warranty.
- Aqua Control, Inc. or its distributors are not liable for electrician's fees incurred for troubleshooting electrical issues.

Safety	2	Optional Lighting Parts List	8
Assembly & Start Up Instructions	3	Troubleshooting Guide	
Maintenance & Accessory Installation	4	- Torrent Pattern Conversation	9
Evolution mooring floating units	5	Warranty Disclaimer	10
Evolution anchoring floating units	6		
Evolution Parts List	7		

## OPTIONAL ACCESSORIES



# QUICK STARTUP INSTRUCTIONS

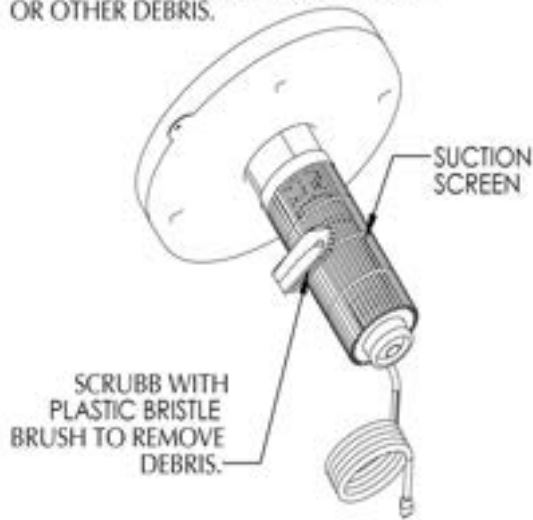


# MAINTENANCE AND ACCESSORY INSTALLATION

*CAUTION!! BEFORE YOU BEGIN, DISCONNECT FROM POWER (UNPLUG FROM CONTROL)*

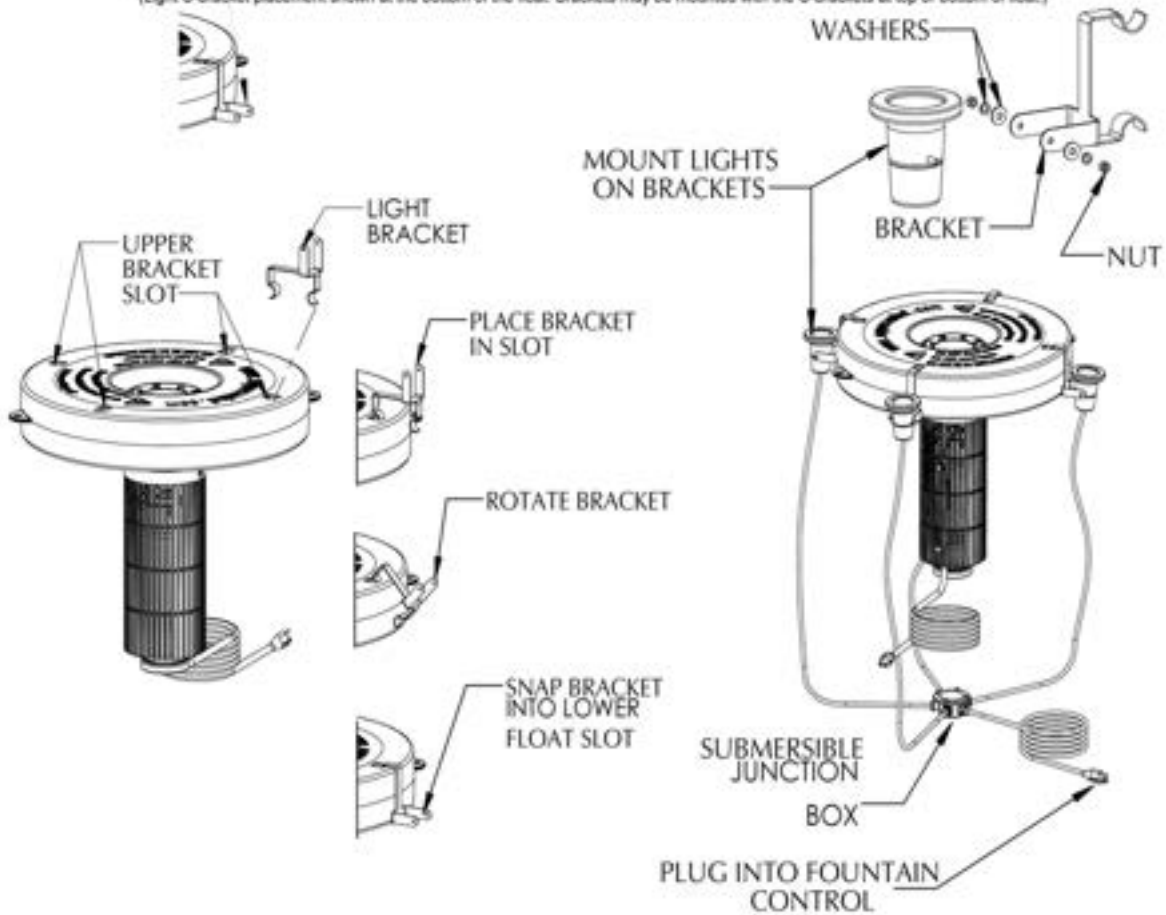
## PLUGGED SUCTION SCREEN

IF YOUR SUCTION SCREEN BECOMES PLUGGED BY POND WEEDS OR OTHER DEBRIS.



## OPTIONAL LIGHT PACKAGE INSTALLATION

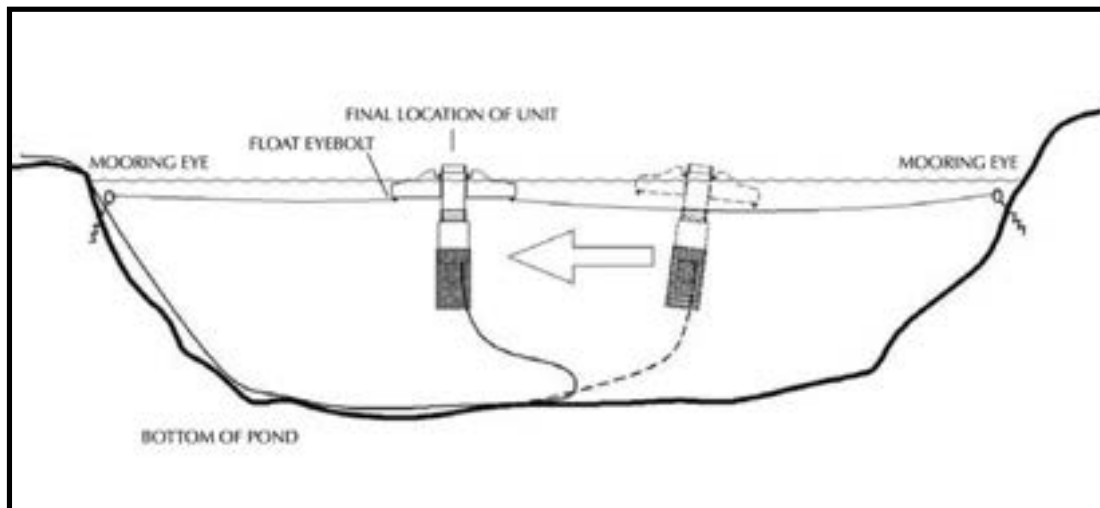
(Light U-bracket placement shown at the bottom of the float. Brackets may be mounted with the U-brackets at top or bottom of float.)



# INSTALLATION

## EVOLUTION SERIES LAUNCHING MOORING - FLOATING UNITS

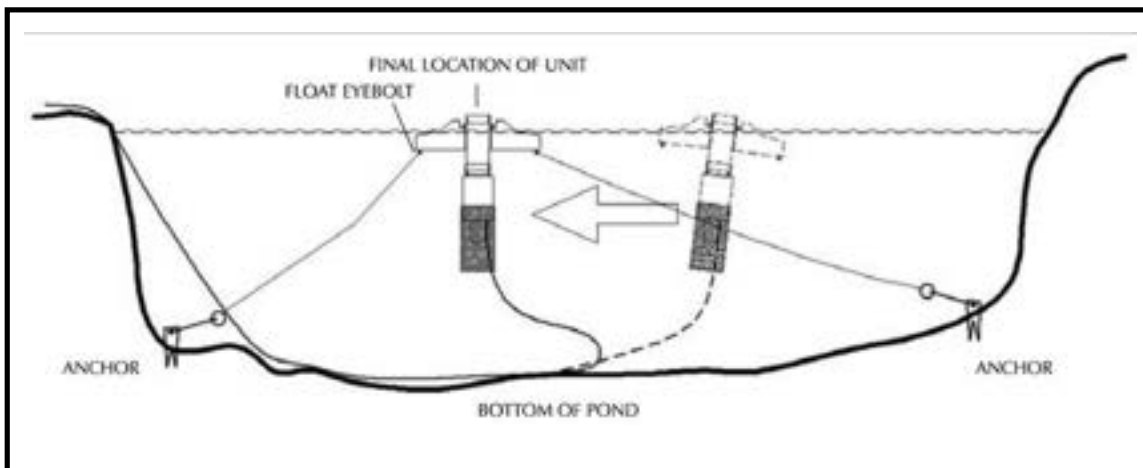
1. Tie the mooring line to the eye-bolts on the float.
2. Pull the unit past its final location by a distance at least equal to the depth of the dam at the desired final location.
3. Bring the unit back to the final position. There should be enough slack on the electric cable to allow it to hang straight down without tension on the unit causing it to tilt the spray pattern.
4. Hold the position of the unit in the water by tying the mooring lines to the mooring stakes on shore.
5. Motor torque causes the unit to try to rotate. Upon start-up, watch to make sure the unit cannot rotate more than  $1/3$  of a turn. If it is allowed to rotate, the electric cable can pull around the unit very tightly and cause damage.
6. Never allow long lengths of rope to float near the intake of the unit where it can be pulled in and entangled in the propeller or impeller.



# INSTALLATION

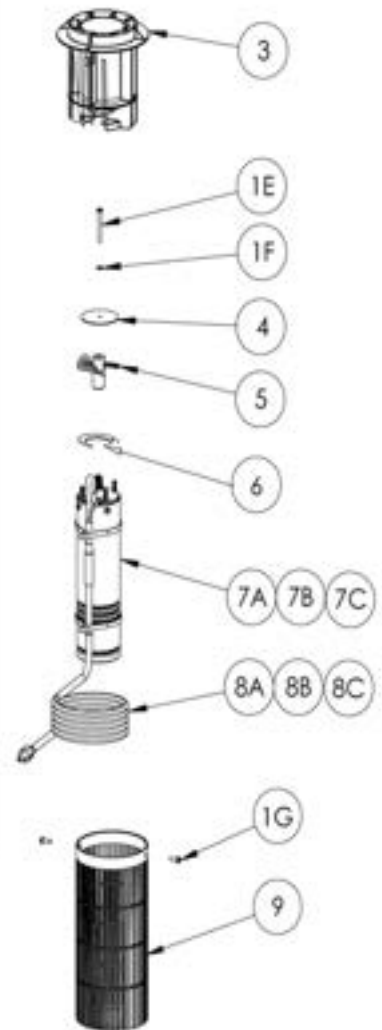
## EVOLUTION SERIES LAUNCHING ANCHORING - FLOATING UNITS

1. Tie the anchoring rope to the eye-bolts on the float. Use a rope at least three times the depth and be sure it has not slack.
2. Pull the unit past its final location by a distance at least equal to the depth of the pond at the desired final location.
3. Bring the unit back to the final position. There should be enough slack on the electrical cable to allow it to hang straight down without tension on the unit causing it to tilt the spray pattern.
4. Tie anchors to the anchor lines. Use multiple anchors if the bottom is smooth or slippery. Heavy or multiple concrete blocks are suitable for soft bottoms where they will sink into the mud but, they are inadequate on hard, smooth, slippery or sloping bottoms.
5. Anchors should be set out at a MAXIMUM of 45 degrees to the surface of the water. It is preferred to have the anchor line as parallel to the surface as possible. They should be on opposite sides of the float. To ensure the unit remains very close to certain position, a third (or fourth) anchor line can be used.
6. Be sure that the electrical cable has slack, hangs straight down from the unit and is not tangled with the anchor lines. The anchor lines must be kept tight enough to prevent the unit from rotating due to motor torque. If the water level changes or the anchor lines otherwise become slack, the unit will rotate and twist the electrical cable causing cable damage.



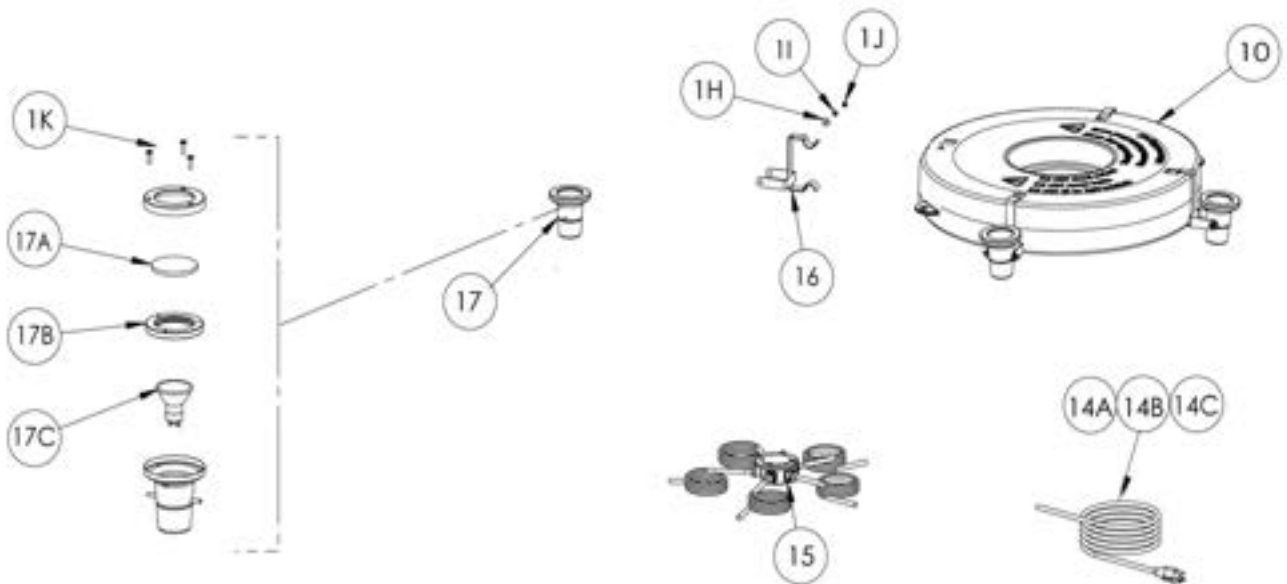
# EVOLUTION PARTS LIST

ITEM#	PART#	DESCRIPTION	QTY
1	* EV-H-KIT	HARDWARE KIT (INCLUDES ITEMS 1F THRU 1K)	1
1F	EV-H-LW-0.25	1/4 LOCK WASHER	1
1G	EV-H-MSP-0.75	1/4-20 X 3/4 PAN HEAD MACHINE SCREW	2
<b>*OPTIONAL LIGHTING HARDWARE (INCLUDED IN HARDWARE KIT)</b>			
1H	* EV-H-FW-5	5MM FLAT WASHER	8
1I	* EV-H-LW-5	5MM LOCK WASHER	8
1J	* EV-H-NC-5	5MM ACORN NUT	8
1K	* EV-H-MSF-4X16	4MM X 16 FLAT HEAD MACHINE SCREW	3
<b>NOZZLE KIT (INCLUDES NOZZLE, FLOW STRAIGHTENER &amp; FASTENERS)</b>			
2A	EV6-N-0.50-ARU	1/HP ARUM NOZZLE KIT	-
2A	EV6-N-0.50-CLA	1/2HP CLUSTER ARCH NOZZLE KIT	-
2A	EV6-N-0.50-FLE	1/2HP FLEUR de LIS NOZZLE KIT	-
2A	EV6-N-0.50-MET	1/2HP METRO NOZZLE KIT	-
2A	EV6-N-0.50-SAR	1/2HP SPIDER & ARCH NOZZLE KIT	-
2A	EV6-N-0.50-TIA	1/2HP TIARA NOZZLE KIT	-
2A	* EV6-N-0.50-G2	1/2HP GUSHER 2 (STATIONARY ONLY)	-
2A	* EV6-N-0.50-G4	1/2HP GUSHER 4 (STATIONARY ONLY)	-
2A	* EV6-N-0.50-G6	1/2HP GUSHER 6 (STATIONARY ONLY)	-
3	EV-R-THROAT	EVOLUTION THROAT	1
4	EV-H-FW-PROP	PROPELLER WASHER	1
5	EV6-R-P-0.50	1/2HP PROPELLER	1
6	EV-R-SPACER	MOTOR SPACER	1
<b>REPLACEMENT MOTOR OPTIONS</b>			
7A	EV6-MA-0.50-050	1/2HP MOTOR WITH 50' CORD & MOLDED PLUG	1
7B	EV6-MA-0.50-100	1/2HP MOTOR WITH 100' CORD & MOLDED PLUG	1
7C	EV6-MA-0.50-175	1/2HP MOTOR WITH 175' CORD & MOLDED PLUG	1
<b>MOTOR CORD OPTIONS (INCLUDES MOTOR CORD, MOLDED PLUG)</b>			
8A	EV6-R-MC-050-F	50' MOTOR CORD	1
8B	EV6-R-MC-100-F	100' MOTOR CORD	1
8C	EV6-R-MC-175-F	175' MOTOR CORD	1
9	EV-R-SCREEN	EVOLUTION SUCTION SCREEN	1
10	EV-R-FLOAT	EVOLUTION FLOAT	1
11	EV-R-ANCHOR	EVOLUTION MOORING STAKES	2
12	EV-R-ROPE	100' BALCK MORRING ROPE	1



# OPTIONAL LIGHTING PARTS

ITEM#	PART#	DESCRIPTION	QTY
<b>LIGHT CORD OPTIONS (INCLUDES SPLICE KIT &amp; MOLDED PLUG)</b>			
14A	EV6-R-LC-050	50' LIGHT CORD	1
14B	EV6-R-LC-100	100' LIGHT CORD	1
14C	EV6-R-LC-175	175' LIGHT CORD	1
15	EV-R-LJB-4	LIGHT JUNCTION BOX WITH 6' CORD & SPLICE KIT	1
16	EV-R-LGT-BKT	EVOLUTION LIGHT BRACKET	4
17	EV-A-RL	EVOLUTION LIGHT REPAIR ASSEMBLY	4
<b>OPTIONAL LIGHT FIXTURE COMPONENTS</b>			
17A	EV-R-LENS	EVOLUTION CLEAR LENS FOR LIGHT	4
17B	EV-R-GASKET	EVOLUTION LIGHT GASKET	4
17C	EV6-R-BLB-BLU	BLUE LED LAMP	4
17C	EV6-R-BLB-WHC	COOL WHITE LED LAMP	4
17C	EV6-R-BLB-WHW	WARM WHITE LED LAMP	4
17C	EV6-R-BLB-YEL	YELLOW LED LAMP	4
17C	EV6-R-BLB-GRE	GREEN LED LAMP	4
17C	EV6-R-BLB-RED	RED LED LAMP	4

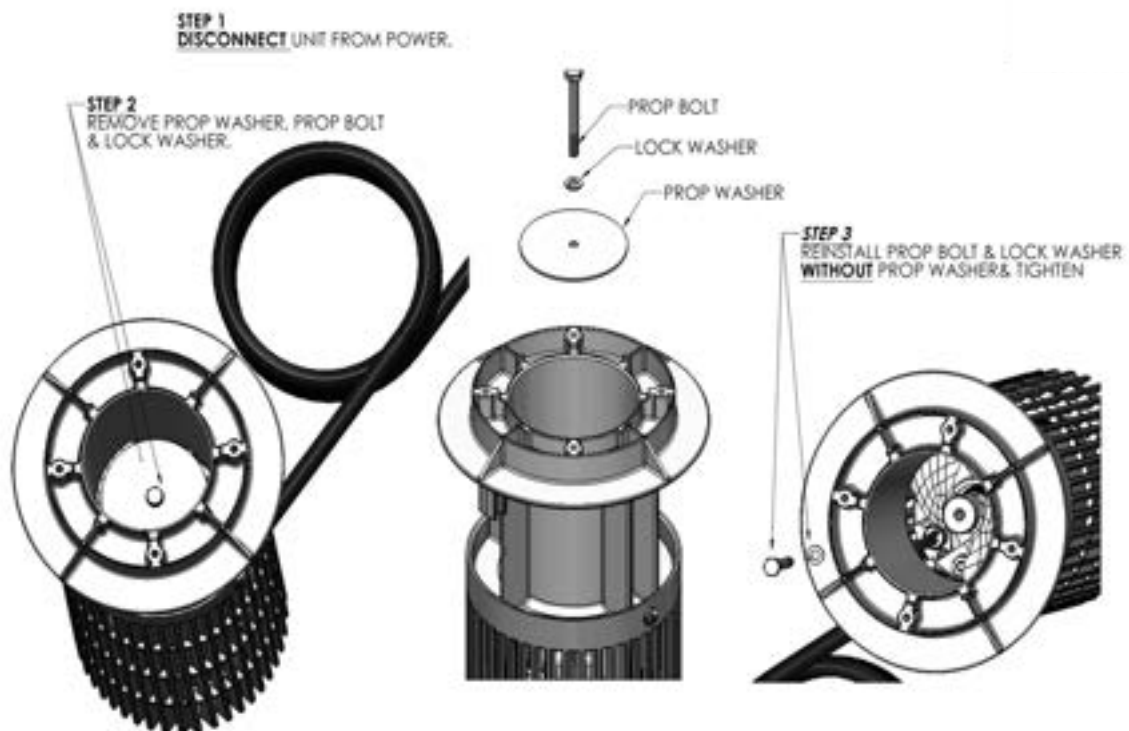




# EVOLUTION HALF HP SERIES FOUNTAIN TROUBLESHOOTING GUIDE

Trouble	Check	Possible solutions
Fountain does not work or starts then stops	Not plugged in	Cord must be plugged into a 3-wire outlet that is protected by a Ground Fault Circuit Interrupter (GFCI).
	GFCI tripped	Reset GFCI. If GFCI will not reset or trips immediately, unplug pump and lights and reset GFCI. If GFCI will not reset, there may be a problem with the motor or the incoming power. If the GFCI resets, plug the pump in. If the GFCI trips, there may be a problem with the pump cord. If the GFCI holds, plug into the optional lights. If the GFCI trips, there may be a problem with the lights. Contact Technical Support to troubleshoot lights or pump.
	GFCI not tripped, not running	Disconnect power. Check propeller for obstruction. These motors have internal overloads. If the propeller is jammed, the internal overload may trip. This overload may require up to 10 minutes to cool down and reset. If the motor does not restart, there may be other motor problems. Contact Technical Support to troubleshoot the pump.
Fountain spray pattern is smaller	Fountain intake clogged	Disconnect power, check suction screen for obstruction and remove debris.
	Nozzle clogged	Disconnect power, remove nozzle and check for obstruction and remove debris.

## CONVERTING YOUR EVOLUTION SERIES FOUNTAIN TO A TORRENT SURFACE AERATION MIXER PATTERN



# AQUA CONTROL

*Evolution Series Fountain*

## *Limited Warranty*

Aqua Control, Inc. warrants to the original purchaser (end user) of any Evolution Series Fountain manufactured by Aqua Control, Inc. that any part thereof which proves to be defective in materials or workmanship, as determined by the factory within two years from the purchase date, will be repaired or replaced at no charge with a new or remanufactured part, and returned freight prepaid. The end user shall assume all the responsibility and expense for removal, packaging, and freight to ship to Aqua Control to determine the warranty claim and for all reinstallation expenses.

The warranty is void in cases where damage results from: improper installation, operation with no flow, continued operation with only partial flow, continued operation with obstructions that result in pump cavitation (noisy operation), improper electrical connection, improper voltage, alteration, lightning, careless handling, misuse, abuse, freezing, disassembly of motor, or failure to follow maintenance or operating instructions. Modification or repair by an unauthorized repair facility will void the warranty.

**In no case will Aqua Control or its distributors accept responsibility for any costs incurred by the user during installation, removal, inspection, evaluation, repair, parts replacement, or for return freight. Nor will any liability be accepted for loss of use, loss of profits, loss of goodwill, for consequential damage, or for personal injuries to the purchaser or any person.**

In the event of problems believed to be covered under warranty, it will be necessary to notify the distributor who will try to help resolve the problem and who may contact the factory for additional assistance. If it is concluded that there may be a defect which may be covered under warranty, it will be necessary to get a Return Material Authorization (RMA) from the distributor before shipment. Freight collect shipments will not be accepted by the factory on warranties or repairs.

The product or part(s) must be returned freight prepaid, to the factory, as directed, and in its original packaging or in a container which will prevent damage. Parts returned under warranty and damaged during shipping will not be covered under warranty for the shipping damage.

If the factory evaluation of the returned goods concludes that the failure is due to defects in materials or workmanship, the part or parts in question will be replaced under warranty with new parts, remanufactured parts, or will be repaired at the factory's option. The warranty period for all parts supplied under warranty will terminate at the end of the original product's warranty. All warranty shipments from the factory will be shipped freight prepaid.

Warranty registration is HIGHLY recommended.

No implied warranties of any kind are made by Aqua Control, Inc. for its products, and no other warranties, whether expressed or implied, including implied warranties of merchantability and fitness for a particular purpose, shall apply. Should an Aqua Control product prove to be defective in materials or workmanship, the retail purchaser's sole remedy shall be repair or replacement of the product as expressly provided above.

Aeration Fountains Australia  
41 Yazaki Way, Carrum Downs  
Vic, Australia, 3201  
P: (03) 9071 2442