

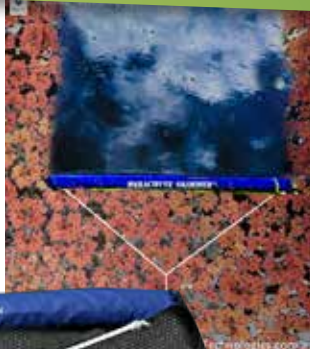


AQUATIC TECHNOLOGIES

The Aquatic Weed Control Experts

# PRODUCT: AZOLLA & SALVINIA SKIMMER

## TARGET: FLOATING AQUATIC WEEDS



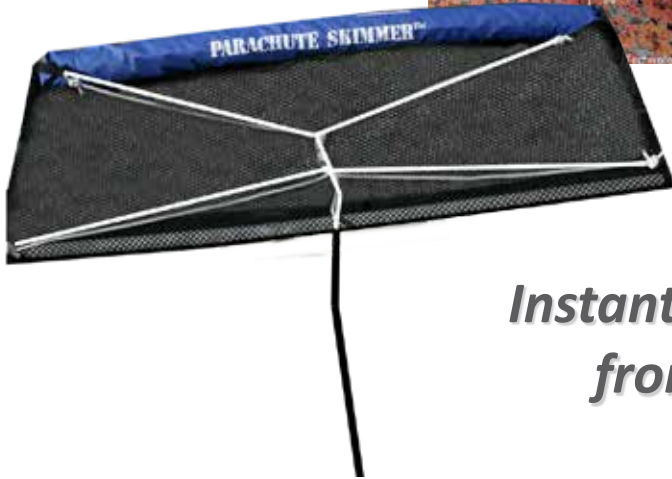
Azolla



Salvinia Molesta



Large salvinia infestations



*Instantly remove Azolla and Salvinia from your pond, dam or lake.*

## FREE FLOATING COARSE MESH SKIMMER

Made for the quick and easy removal of Azolla and Salvinia directly from the surface of the water, this handy skimmer is designed with a tailored mesh for effective collection.

The physical removal of these aquatic weeds can do wonders for your water - even partial removal can increase the effectiveness of any concentrates or aquatic weed-killers you're using.

When free-floating aquatic weeds are physically removed from the surface of your water, this decreases the prevalence of future blooms by decreasing nutrient densities in the water.

Make your pond look great and freshen up your water with the help of the Azolla & Salvinia Skimmer.

SAFE FOR



Drinking Water, Swimming, Irrigation, Stock, Fish.

BUY NOW



Available in 2 sizes:  
91cm & 152cm.



AQUATIC TECHNOLOGIES

The Water Treatment Experts

Re-Order Online:

[WWW.AQUATICTECHNOLOGIES.COM.AU](http://WWW.AQUATICTECHNOLOGIES.COM.AU)

Perfect for ponds, dams and lakes, this handy skimmer clears a path in your water by skimming free-floating surface weeds and vegetation.

## HOW TO REMOVE AZOLLA & SALVINIA WITH THE COARSE MESH SKIMMER



STEP 1 - Unpack skimmer & unfurl 10m cord.



STEP 2 - Hold the very end of cord, toss out the skimmer.



STEP 3 - Slowly drag the skimmer back to shore.



STEP 4 - Clear away collected weeds.

Perfect for ponds, dams and lakes, this handy skimmer clears a path in your water by skimming free-floating surface aquatic weeds and vegetation.

Easy to use and totally safe for the environment, this skimmer captures the all the aquatic weeds in its path. When you lift it out of the water, it traps what you've caught for easy disposal.

**Pro Tip: Aquatic vegetation is a great fertiliser!**

### SUITABLE FOR



**Large Pond**

15,000L - 50,000L  
0 - 50m<sup>2</sup>



**Small Dam**

50,000L - 1ML  
50m<sup>2</sup> - 2,000m<sup>2</sup>



**Large Dam**

1ML - 10ML  
2,000m<sup>2</sup>-